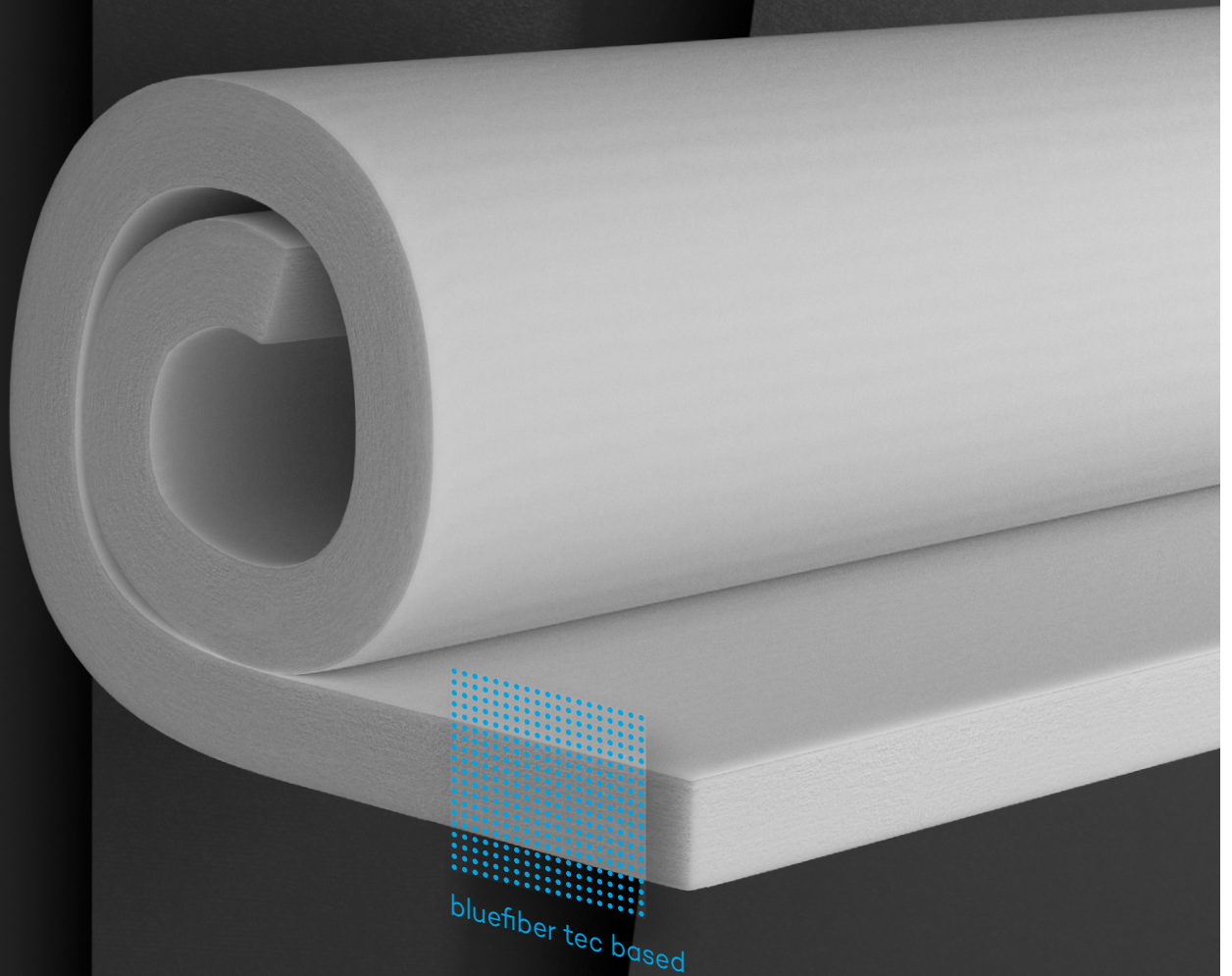


# bluefiber

smart acoustic technology



## smart acoustic wool

General product information, instructions  
for use and safety information for  
the product bluefiber wool

[bluefiber.sandler-group.com](http://bluefiber.sandler-group.com)

a brand of **sandler**

# General product information, instructions for use and safety information for the product bluefiber wool

## 1. General product information

- 1.1 Product identification
- 1.2 Product description
  - a) Intended purpose
  - b) Intended users
  - c) Conditions of use
  - d) Estimated average and minimum service life for the specified intended purpose (durability)
  - e) Main materials used
- 1.3 Manufacturer's contact details
  - a) Name
  - b) Postal address
  - c) Telephone
  - d) Email address
  - e) Website
- 1.4 If not identical to 1.3, contact details of the manufacturer or authorized representative responsible for:
  - a) Information on installation, maintenance, use, dismantling, and demolition
  - b) Information on risks
  - c) Information in case of product failure
- 1.5 Contact details of the product information point for construction in the Member State where the product is made available

## 2. Safety Information

- 2.1 Instructions for use
- 2.2 Safety signs
- 2.3 Intended use of products and systems
- 2.4 Safety during transport, installation, dismantling, maintenance, deconstruction, and demolition
- 2.5 Potential risks of the product and any reasonably foreseeable misuse
- 2.6 Instructions for assembly, installation, and connection, including drawings, diagrams, and, where applicable, means of attachment to other products and parts of structures
- 2.7 Instructions for safe operation and maintenance, including protective measures to be taken
- 2.8 Where necessary, guidance on training or familiarization of installers or operating personnel
- 2.9 Information on what to do in case of product failure or accidents

## 3. Instructions for use

- 3.1 Cutting instructions
- 3.2 Assembly instructions
- 3.3 Compatibility and integration into systems or kits
  - a) Compatibility with other materials or products, whether or not covered by this Regulation
  - b) Electrical and electromagnetic compatibility
  - c) Software compatibility
  - d) Integration into systems or kits
- 3.4 Maintenance requirements to maintain product performance during its service life
  - a) Description of setup and maintenance tasks to be carried out by the user, as well as preventive maintenance measures
  - b) Type and frequency of inspections and maintenance tasks required for safety and durability, and, where necessary, details of parts subject to wear and criteria for their replacement
  - c) Information on what to do in case of product failure or accident
- 3.5 Safety during use
  - a) Instructions on protective measures to be taken by the user, including any required personal protective equipment
  - b) Instructions for the safe use of the product, including protective measures to be taken during use
  - c) Information on what to do in case of product failure or accident during use
- 3.6 Training and other requirements essential for safe use
- 3.7 Risk mitigation measures beyond sections 2.1 to 3.6
- 3.8 Recommendations for:
  - a) Repair
  - b) Disassembly
  - c) Reuse
  - d) Refurbishment
  - e) Recycling
  - f) Safe Storage

## 1. General product information

### 1.1 Product identification

bluefiber wool 15, white  
bluefiber wool 20, white  
bluefiber wool 30, white  
bluefiber wool 40, white  
bluefiber wool 15, black  
bluefiber wool 20, black  
bluefiber wool 30, black  
bluefiber wool 40, black

### 1.2 Product description

#### a) Intended purpose

Acoustic mats for use in buildings for sound insulation in acoustic ceilings, acoustic walls, and partition walls.

#### b) Intended users

Industrial processors, craft businesses, and specialized trade.

#### c) Conditions of use

The tested installation conditions regarding the fire performance of the material (with or without butt joints) are:

- Distance of  $\geq 80$  mm to the same or other plane building products.
- Mechanically mounted on gypsum board substrates or other substrates with a fire behaviour classified as class A1 and A2-s1, d0 according to DIN EN 13501-1. These substrates must have a thickness of  $\geq 12,5$  mm and a raw density of  $\geq 525$  kg/m<sup>3</sup>.
- Mechanically mounted on metal substrates with a melting point of  $\geq 500$  °C which conform to classes A1 or A2-s1, d0 according to DIN EN 13501-1. These substrates must have a thickness of  $\geq 1,0$  mm and a raw density of  $\geq 2025$  kg/m<sup>3</sup>.

If a bluefiber wool product already placed on the market or put into service is modified, the manufacturer's Declaration of Performance no longer applies. In such cases, the operator is responsible for maintaining the safety of the bluefiber wool and must comply with the requirements of the applicable safety regulations for bluefiber wool and, if necessary, carry out a new conformity assessment procedure.

#### d) Estimated average and minimum service life for the specified intended purpose (durability)

According to ETA-20/0637, the acoustic mats are assumed to have a service life of at least 50 years. This indication of service life cannot be understood as a manufacturer's guarantee but serves solely as a guideline for selecting the appropriate product with regard to the assumed economically reasonable service life of a building.

#### e) Main materials used

The acoustic mats consist of colored (white/black) polyester fibers that do not contain recycled components or flame retardants.

### 1.3 Manufacturer contact details

#### a) Name

Sandler AG

#### b) Postal address

Lamitzmühle 1  
95126 Schwarzenbach/Saale  
Germany

#### c) Telephone

+49 (0) 9284 600

#### d) E-Mail-address

bluefiber@sandler-group.com

#### e) Website

of the manufacturer: <https://www.sandler-group.com/de-de> of the promotional information: <https://www.bluefiber.sandler-group.com/de>

### 1.4 If not identical to 1.3, contact details of the manufacturer or authorized representative responsible for:

#### a) Information on installation, maintenance, use, dismantling, and demolition

#### b) Information on risks

#### c) Information in case of product failure

Not applicable

## 1.5 Contact details of the product information point for construction in the Member State where the product is made available

United Kingdom  
Ministry of Housing, Communities & Local Government  
Energy and Safe Materials Divisions  
SW Quarter 2<sup>nd</sup> floor  
Fry Building  
2 Marsham Street  
London SW1P 4DF

[construction.products@communities.gov.uk](mailto:construction.products@communities.gov.uk)

<https://www.gov.uk/guidance/eu-construction-products-regulation-and-ce-marking-including-uk-product-contact-point-for-construction-products>

Ireland  
Product Contact Point for Construction, Department of Housing, Planning and Local Government  
Custom House  
Dublin 1, D01 W6X0  
Ireland

[pcp@housing.gov.ie](mailto:pcp@housing.gov.ie)

<http://www.housing.gov.ie/housing/building-standards/construction-products-regulation/product-contact-points-construction>

## 2. Safety information

### 2.1 Instructions for use

This product information, user manual, and safety information are intended as a guide for handling bluefiber wool. The information, specifications, execution details, and listed products are based—unless otherwise indicated—on the validity of the usability certificate in the form of ETA-20/0637 at the time of preparation.

### 2.2 Safety signs



General  
Mandatory Sign



Observe the  
Instructions for Use



Use  
Hearing Protection



Use  
Protective Gloves



Use  
Protective Clothing



Warning:  
Sharp Object

### 2.3 Intended use of products and systems



The declared performance can only be assumed if the acoustic mats are installed in accordance with the manufacturer's processing guidelines and, in their installed state as well as during transport, storage, and installation, are protected against moisture, weathering, significant moisture transfer, condensation, wind, or pressure loads. In addition, the respective national regulations must be observed regarding the application of the acoustic mats.



This product information, user manual, and safety instructions contain notices that must be observed to ensure personal safety and prevent property damage. Before working with bluefiber wool, the instructions must be read and fully understood. Pay attention to the safety notices preceding each section or set of instructions in this manual.



## 2.4 Safety during transport, installation, dismantling, maintenance, deconstruction, and demolition



### Qualified Personnel

The proper use of bluefiber wool requires skilled personnel from the construction industry with basic knowledge of processing acoustic insulation materials. Personnel must be familiar with the manufacturer's processing guidelines and be able to follow the installation instructions. Safety and warning notices must be observed and complied with.

bluefiber wool is intended for use in buildings for sound insulation in acoustic ceilings, acoustic walls, and partition walls.

Cutting requires knowledge of handling suitable tools (e.g., insulation saw). During installation, specific fire protection requirements must be observed, particularly the prescribed distances and fastening methods on suitable substrates (metal, mineral substrates, or non-combustible construction boards).

After installation, bluefiber wool is not operated (passive). Therefore, there are no special requirements for the user.

### Handling Instructions

Bluefiber wool must be protected against moisture, weathering, significant moisture transfer, condensation, wind, or pressure loads during transport, storage, installation, and in its installed state.

### Disposal Instructions

- Local regulations must be observed.
- If material recycling is not possible, disposal must be carried out in accordance with AVV No. 040222.

## 2.5 Potential risks of the product and any reasonably foreseeable misuse

The product bluefiber wool is not classified as a "hazardous substance" according to the Mixture Regulation (EC) No. 1272/2008.

No accidents, incidents, or malfunctions are known. The absence of an accident history, a low number of accidents, or minor damage caused by accidents should not lead to the assumption that the risk is low.

No health impairments are known.

Misuse may occur through improper cutting with unsuitable tools or blunt blades, incorrect installation without observing the tested installation conditions, or installation on unsuitable substrates. If installation personnel lack sufficient knowledge of the necessary installation conditions and have no prior experience with installing acoustically effective insulation materials, the functionality of bluefiber wool may be compromised. Furthermore, installation personnel should be familiar with the necessary safety precautions when using tools.

## 2.6 Instructions for assembly, installation, and connection, including drawings, diagrams, and, where applicable, means of attachment to other products and parts of structures



- When cutting bluefiber wool, there is a risk of cuts from sharp tools. Appropriate personal protective equipment should be worn in such cases.
- The safety instructions for the tools used must be observed. The operating manual of the tool manufacturer applies.
- The specifications for personnel handling bluefiber wool (see section "Qualified Personnel" under point 2.4) must be complied with.
- Hearing protection must be used where necessary.

## 2.7 Instructions for safe operation and maintenance, including protective measures to be taken

No active power supply is required. Bluefiber wool is a passive acoustic material without electrical, pneumatic, or hydraulic components.

The product functions purely physically through its open-pore structure, which absorbs sound waves and converts them into thermal energy. Consequently, all interfaces to power supply and associated protective measures, such as disconnect switches or fuses, are eliminated. The sound insulation function is ensured solely by the material properties and proper installation.

## 2.8 Where necessary, guidance on training or familiarization of installers or operating personnel



See requirements for "Qualified Personnel" under point 2.4.

## 2.9 Information on what to do in case of product failure or accidents

Product failure: Not applicable.

In case of accidents, contact a first aider or emergency medical services.

### 3. Instructions for use



#### General notes

These instructions are intended as guidance for the transport, handling, and storage of bluefiber wool.

Compliance with these instructions is necessary to ensure that bluefiber wool is not damaged during transport, handling, or storage, thereby maintaining the performance declared in the Declaration of Performance.

Keeping bluefiber wool clean is important for its long-term functionality and visual appearance. During installation and in its installed state, care must be taken to avoid surface contamination. Clean gloves should be used where appropriate.

After successful inspection of installation quality by qualified personnel, the material is released for its intended use.

#### 3.1 Cutting instructions

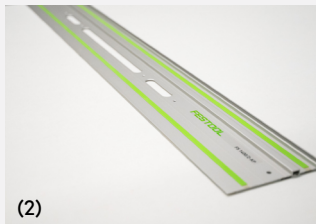
##### Required Accessories

For the installation of bluefiber wool, the following accessories are required (to be provided on site):

- e.g., Festool Cordless Insulation Saw ISC 240 (including cutting set SG-240/W-ISC) or equivalent
- Guide rail
- Guide rail carriage

Ensure that all tools are equipped with sharp blades.

1. Unpack the bluefiber wool roll from the protective film.
2. Prepare your table or workstation for cutting by positioning the guide rail.
3. Install the cutting set SG-240/W-ISC into the Festool Cordless Insulation Saw ISC 240.
4. Then, attach the guide rail carriage.
5. Measure the width/length (cutting dimension) of the metallic/mineral substrate or the construction panel.
6. Unroll the bluefiber wool and mark the required cutting dimension.
7. Position the bluefiber wool on the guide rail so that you can cut it to the required width/length.
8. Secure the Festool Cordless Insulation Saw ISC 240 with the guide rail carriage onto the guide rail.
9. Cut the bluefiber wool according to the marked dimensions.



(2)



(4)



(5)



(8)



(9)

### 3.2 Assembly instructions



The bluefiber wool does not have a distinct front or back side, so either side can be chosen for installation. During installation, ensure cleanliness so that the surface remains free of dirt. If necessary, use clean white gloves.

1. Carefully and loosely place the cut-to-size bluefiber wool accurately on a suitable metallic substrate or an appropriate mineral substrate/construction panel.
2. Suspend the selected substrate in wall or ceiling anchors according to the manufacturer's instructions, or slide it onto the support profile.



### 3.3 Compatibility and integration into systems or kits

a) Compatibility with other materials or products, regardless of whether they fall under this regulation  
See section 1.2 c) Conditions of Use

b) Electrical and electromagnetic compatibility  
Not applicable

c) Software compatibility  
Not applicable

d) Integration into systems or kits  
See section 1.2 c) Conditions of Use

### 3.4 Maintenance requirements to ensure product performance during its service life

a) Description of setup and maintenance tasks to be performed by the user, as well as preventive maintenance measures  
The bluefiber wool acoustic mats are designed to be maintenance-free. No maintenance intervals or special servicing measures are required. If necessary, superficial dirt can be removed using the procedures described in the cleaning instructions. Care must be taken not to damage the surface. The functionality of the acoustic mats should be visually checked during normal application observations. In case of visible damage or heavy soiling that cannot be removed, the material should be replaced.

#### Cleaning Instructions

In general, cleaning the bluefiber wool should be carried out with care to avoid damaging the surface.  
If necessary, use clean gloves.

a) For loose dirt and light surface contamination, such as household or construction dust, gentle cleaning with a duster is recommended. Alternatively, loose dirt can be removed by gently shaking the material.

b) Type and frequency of inspections and maintenance work required for safety and durability, and, if applicable, information on which parts are subject to wear and the criteria for their replacement  
Not applicable

c) Information on what to do in the event of product failure or an accident  
Product failure: Not applicable  
In the event of an accident, contact a first responder or emergency physician.

### 3.5 Safety during use

a) Instructions for protective measures to be taken by the user, including any required personal protective equipment  
There is generally no requirement to use personal protective equipment when handling bluefiber wool.

b) Instructions for the safe use of the product, including protective measures to be taken during use  
During normal use of bluefiber wool, there are no hazards.

Risks of injury primarily exist during processing and transportation. Due to its moderate to high weight, ergonomic handling during transport is essential. Additionally, the tools used for cutting may pose hazards that must be considered.

During installation, there is a risk of falling due to possible installation heights.

The packaging may pose a choking hazard, particularly for small children.

If bluefiber wool is not properly secured/installed, hazards may arise from non-compliant fire behavior.

As with all textile materials, dust may be released. National/local laws and regulations must be observed.

Dust limits must be maintained, if necessary, by installing suitable extraction systems.

Space requirements for processing bluefiber wool include a suitable work surface for cutting with a guide rail and sufficient space for handling the rolls. For installation, access to ceiling or wall surfaces is required, possibly using ladders or work platforms. Adequate transport routes for materials and escape routes must be maintained.

In normal operation or after installation, space requirements include the physical dimensions of the bluefiber wool and any fastening elements.

c) Information on what to do in the event of product failure or an accident during use

No special measures are required in case of inhalation, skin contact, eye contact or ingestion.

### 3.6 Training and other requirements essential for safe use



See requirements for "Qualified Personnel" under section 2.4.

### 3.7 Risk mitigation measures beyond sections 2.1 to 3.6

Not applicable

### 3.8 Recommendations for

a) Repair

Not applicable

b) Disassembly

Disassembly is carried out by carefully removing the loosely placed bluefiber wool from the metallic/mineral substrate or construction panel.

c) Reuse

Reuse is possible if the bluefiber wool is in an undamaged condition and all technical parameters are maintained as in the original state.

d) Refurbishment

Refurbishment is not possible according to the current state of the art.

e) Recycling

Bluefiber wool is recyclable if, after disassembly, it is free from contamination or foreign substances.

f) Safe Storage

- Store bluefiber wool in its original packaging, dry and clean, without direct exposure to sunlight, in enclosed spaces under normal ambient conditions (-40°C to +40°C).
- Always store bluefiber wool upright without compressing it under load.
- Short-term temperature exposure (e.g., during transport) is not critical.
- Do not store for more than 3 months before use.



The declarations of performance and accompanying documents are always up-to-date and clearly structured at the following link:

<https://www.sandler-group.com/de-en/downloads/ce-certification>

Further information on bluefiber can be found at the following link:

<https://bluefiber.sandler-group.com/en>

Technical modifications reserved. The latest edition applies. The information provided reflects our current state of the art. The generally accepted rules of construction technology, relevant standards, guidelines, and professional practices must be observed by the contractor in addition to the processing instructions. Our warranty covers only the flawless condition of our material. Consumption, quantity, and execution details are based on experience and cannot be readily transferred in cases of differing conditions. No contractual or statutory rights can be derived from these notes. Any changes, reprints, and photomechanical or electronic reproduction, even in part, require our express permission.

For further inquiries, please contact:

[bluefiber@sandler-group.com](mailto:bluefiber@sandler-group.com)